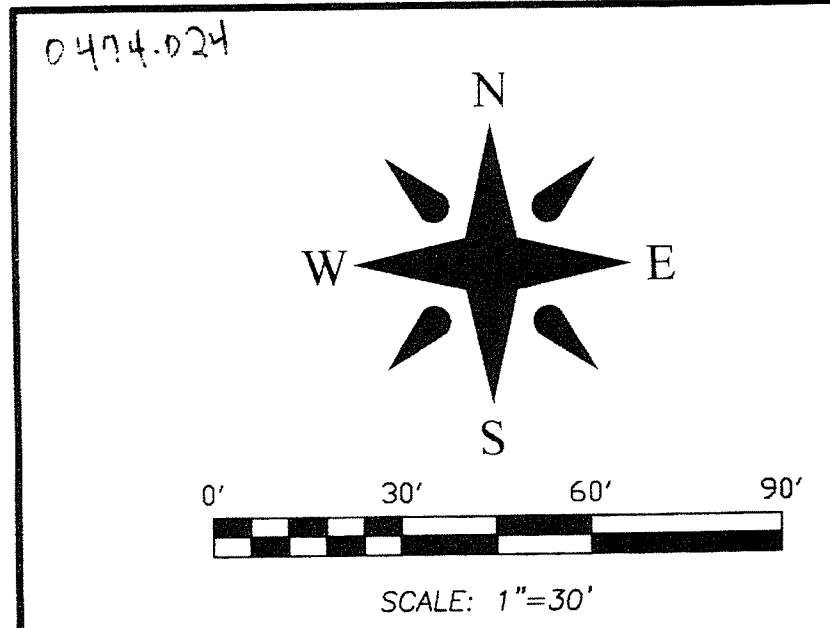


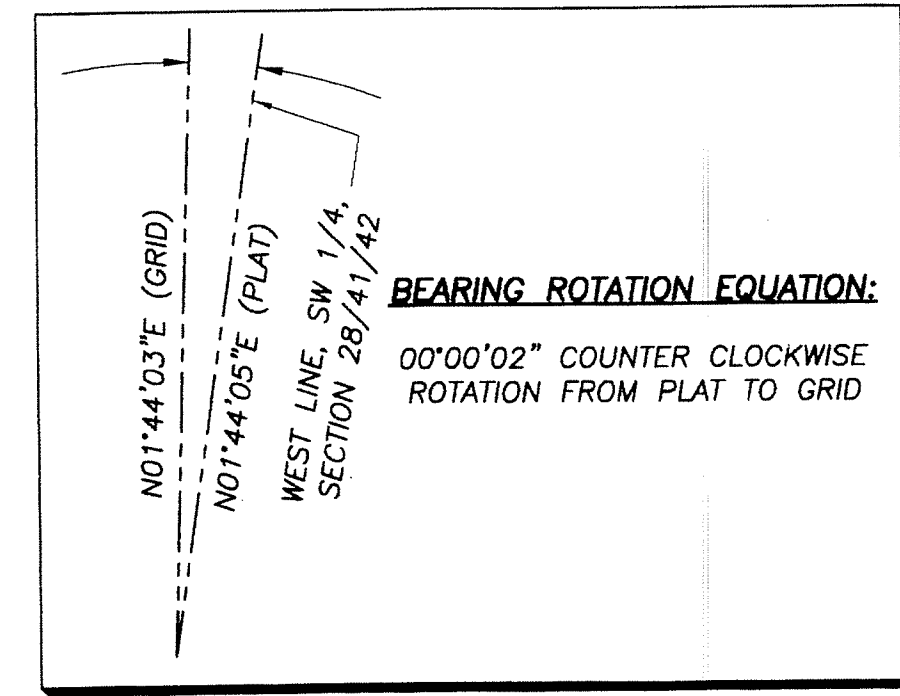
OLD MARSH GOLF CLUB REPLAT No. 20 (a P.U.D.)

BEING A REPLAT OF LOTS 157, 158 AND 159, OLD MARSH GOLF CLUB (a P.U.D.), ACCORDING TO THE PLAT THEREOF, ON FILE IN THE OFFICE OF THE CLERK OF THE CIRCUIT COURT IN AND FOR PALM BEACH COUNTY, FLORIDA, RECORDED IN PLAT BOOK 58, PAGE 62, LYING IN SECTION 28, TOWNSHIP 41 SOUTH, RANGE 42 EAST, PALM BEACH COUNTY, FLORIDA.



WEST 1/4 CORNER SECTION 28/41/42 P.B.C. BRASS DISK MONUMENT (AS PUBLISHED) N: 925086.756 E: 929784.444

NORTH 1/4 CORNER SECTION 28/41/42 P.B.C. BRASS DISK MONUMENT (AS PUBLISHED) N: 927370.293 E: 932504.292

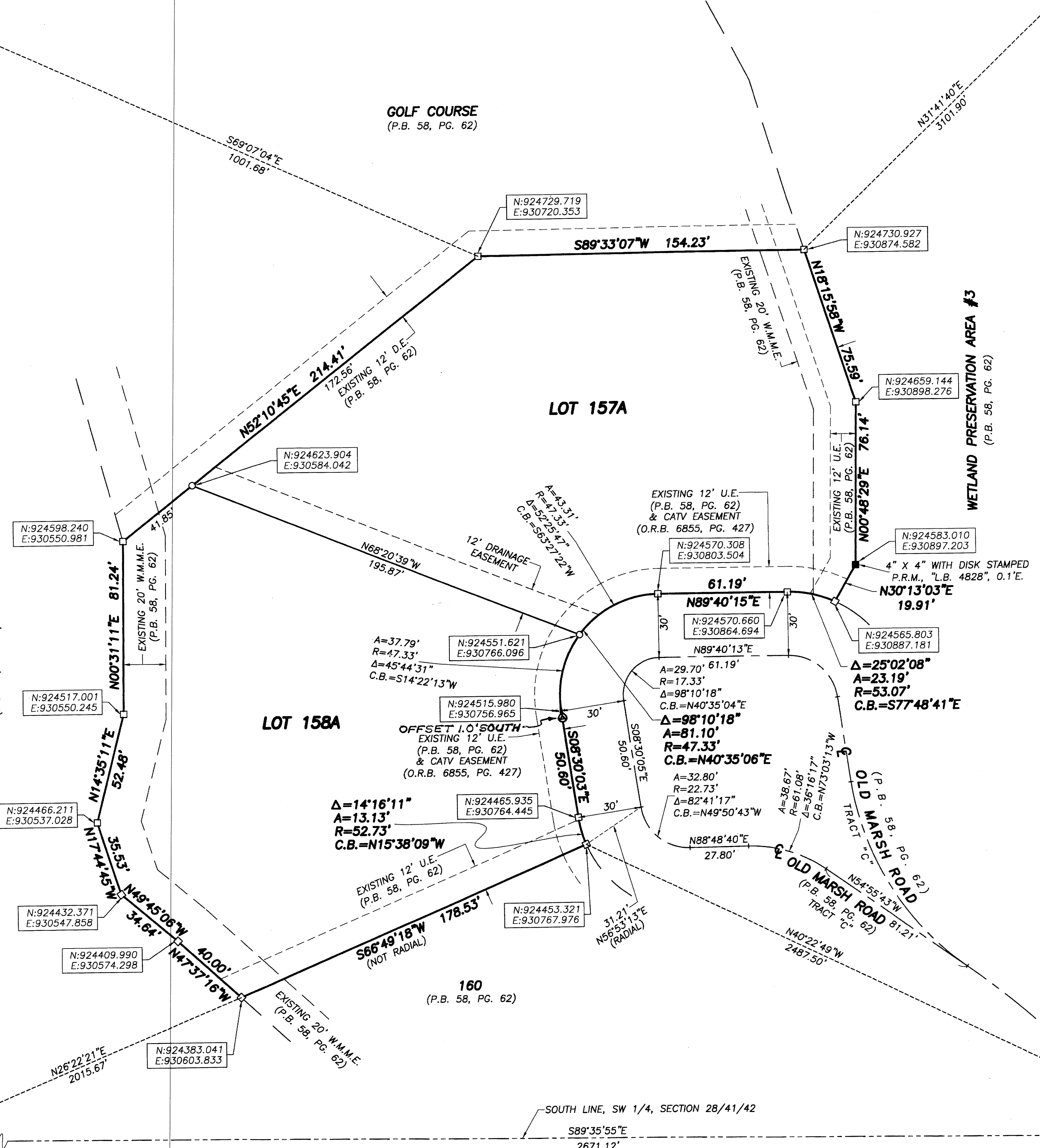


(BASIS OF BEARINGS) N01°44'05"E 2510.76'

WEST LINE, SW 1/4, SECTION 28/41/42

WETLAND PRESERVATION AREA #4 (P.B. 58, PG. 62)

WETLAND PRESERVATION AREA #3 (P.B. 58, PG. 62)



ABBREVIATIONS AND SYMBOLS

- = SET 4"x4" CONCRETE MONUMENT WITH DISK STAMPED "P.R.M. LB 4569"
- = CONCRETE MONUMENT FOUND (AS NOTED ON MAP)
- = SET MAG NAIL & DISK STAMPED "P.R.M. LB 4569"
- ⊙ = SET 5/8" IRON ROD & CAP STAMPED "LB 4569"
- C/L, E = CENTERLINE
- R/W = RIGHT OF WAY
- P.B. = PLAT BOOK
- PG(S) = PAGES
- SEC. = SECTION
- TWP. = TOWNSHIP
- RGE. = RANGE
- U.E. = UTILITY EASEMENT
- D.E. = DRAINAGE EASEMENT
- D.B. = DEED BOOK
- A = ARC LENGTH
- Δ = CENTRAL ANGLE
- R = RADIUS
- C.B. = CHORD BEARING
- O.R.B. = OFFICIAL RECORDS BOOK
- P.B.C. = PALM BEACH COUNTY
- N = NORTHING
- E = EASTING
- P.B.C.U.E. = PALM BEACH COUNTY UTILITY EASEMENT
- P.R.M. = PERMANENT REFERENCE MONUMENT
- W.M.M.E. = WATER MANAGEMENT MAINTENANCE EASEMENT

SW CORNER SECTION 28/41/42 P.B.C. BRASS DISK MONUMENT (AS PUBLISHED) N: 922577.095 E: 929708.458

SOUTH 1/4 CORNER SECTION 28/41/42 P.B.C. BRASS DISK MONUMENT (AS PUBLISHED) N: 922558.406 E: 932379.576

PLAT OF:
**OLD MARSH GOLF CLUB
REPLAT No. 20 (a P.U.D.)**

WALLACE SURVEYING
CORP. LICENSED BUSINESS # 4099
1553 VILLAGE BOULEVARD, WEST PALM BEACH, FLORIDA 33407 • (561) 640-4551

FIELD:	JOB No.: 94-1110	F.B. PG.
OFFICE: R.C.	DATE: JANUARY 2014	DWG. No.: 94-1110-5
C'KD:	REF.: 94-1110-5.DWG	SHEET 2 OF 2